

# FSN 101 Scooter Cover Sheet



Parts List				
Item	Qty	Part Number	Material	Mass
1	1	Deck	Steel	11689.249 g
2	2	Wheel 2	Steel	3701.771 g
3	1	Brake	Steel	640.072 g
4	1	Folding Bracket	Steel	296.412 g
5	1	Fork	Steel	186.778 g
6	1	Neck	Steel	869.803 g
7	1	Stem A	Steel	1179.039 g
8	1	Stem B	Steel	877.806 g
9	1	Clamp	Steel	426.667 g
10	1	Handle Bar	Steel	612.592 g
11	1	Grips	Steel	0.00 g

Dept.	Technical reference	Created by <b>Sestakova Hana 1/31/2026</b>	Approved by	
		Document type <b>Final Drawing Set</b>	Document status	
		Title <b>FSN - 101 - Scooter - SestakovaHana</b>	DWG No. <b>0</b>	
		Rev.	Date of issue	Sheet <b>1/5</b>

1 2 3 4 5 6 7 8

A

B

C

D

E

F

A

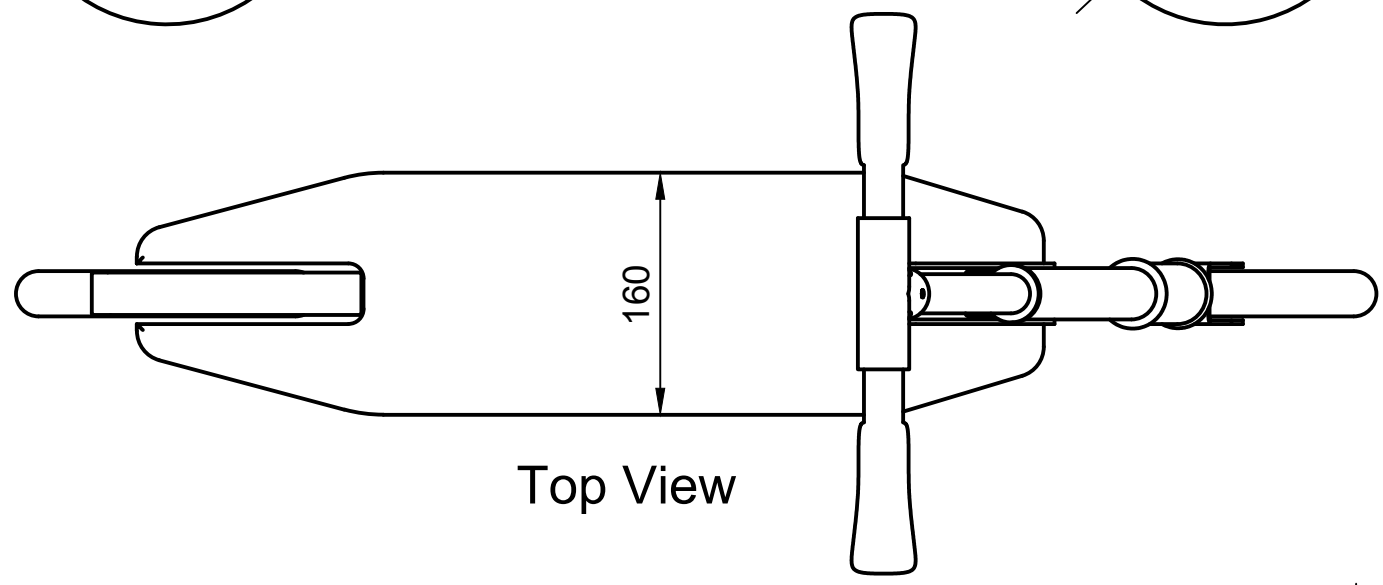
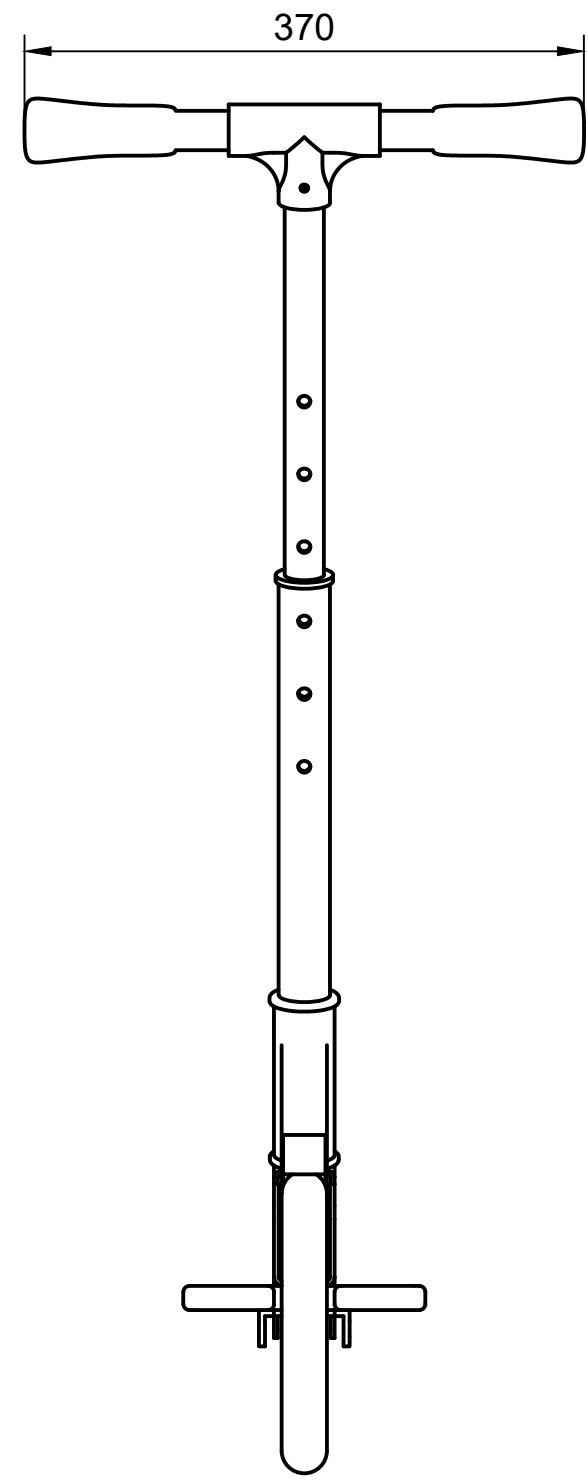
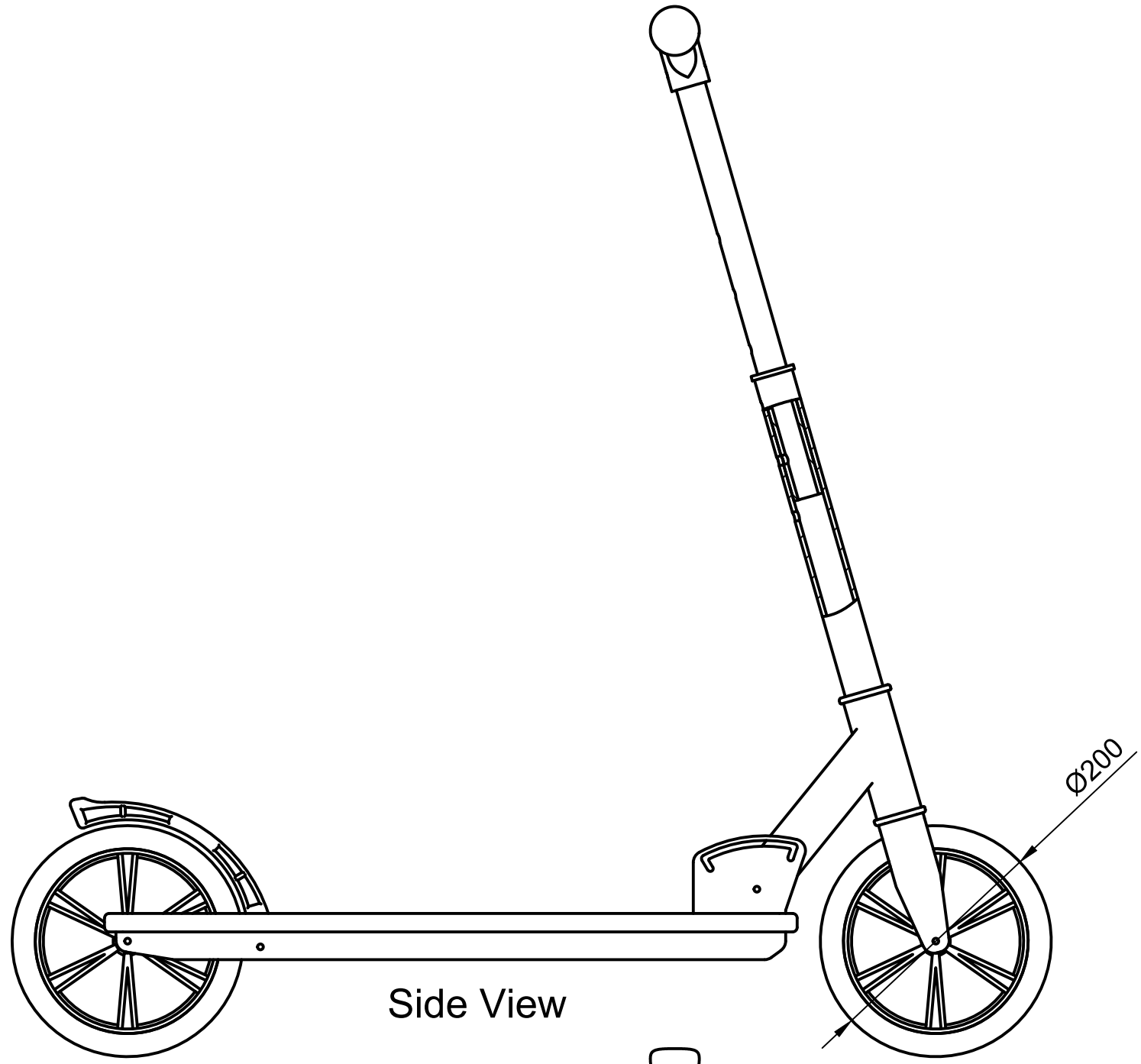
B

C

D

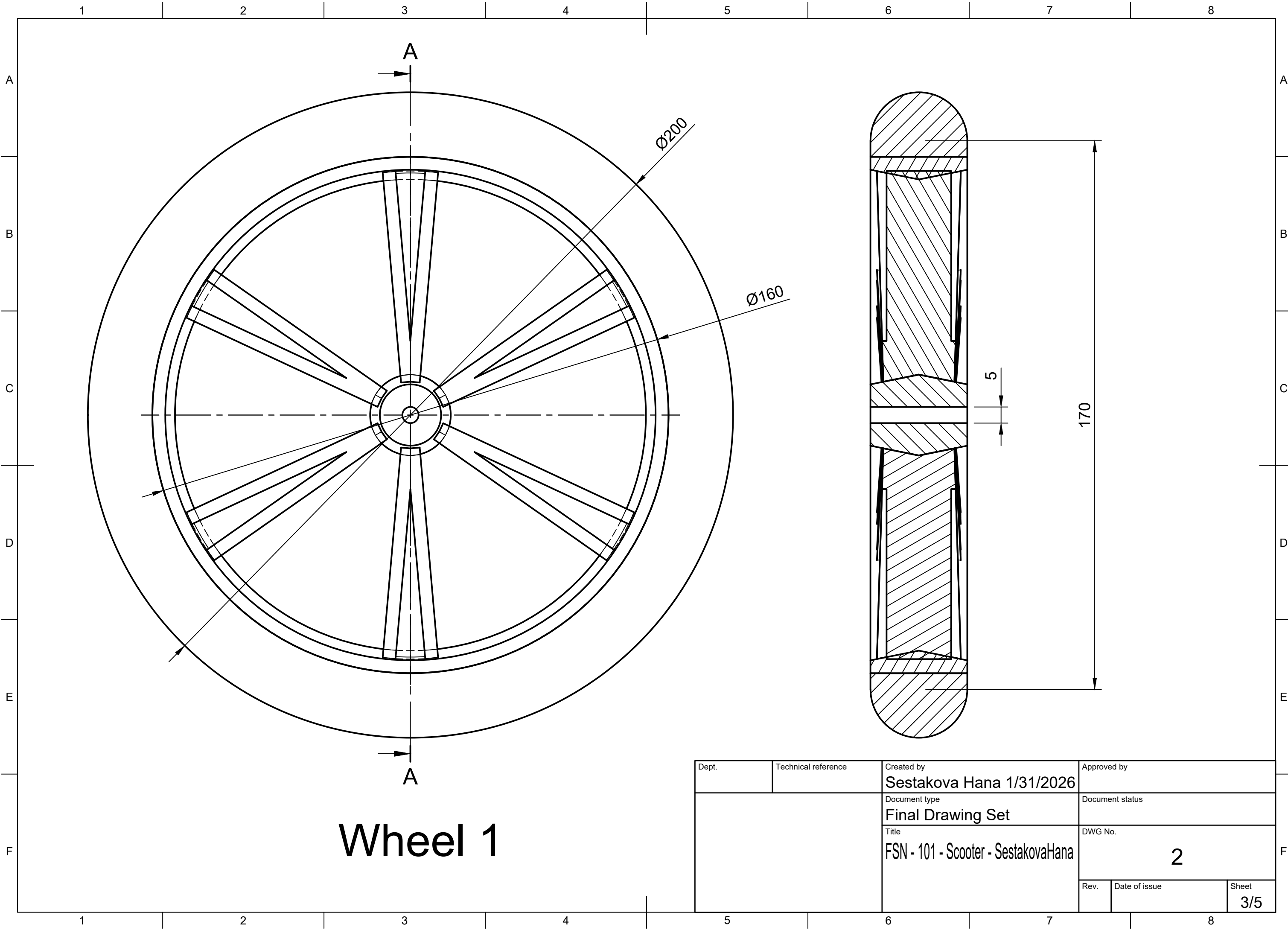
E

F



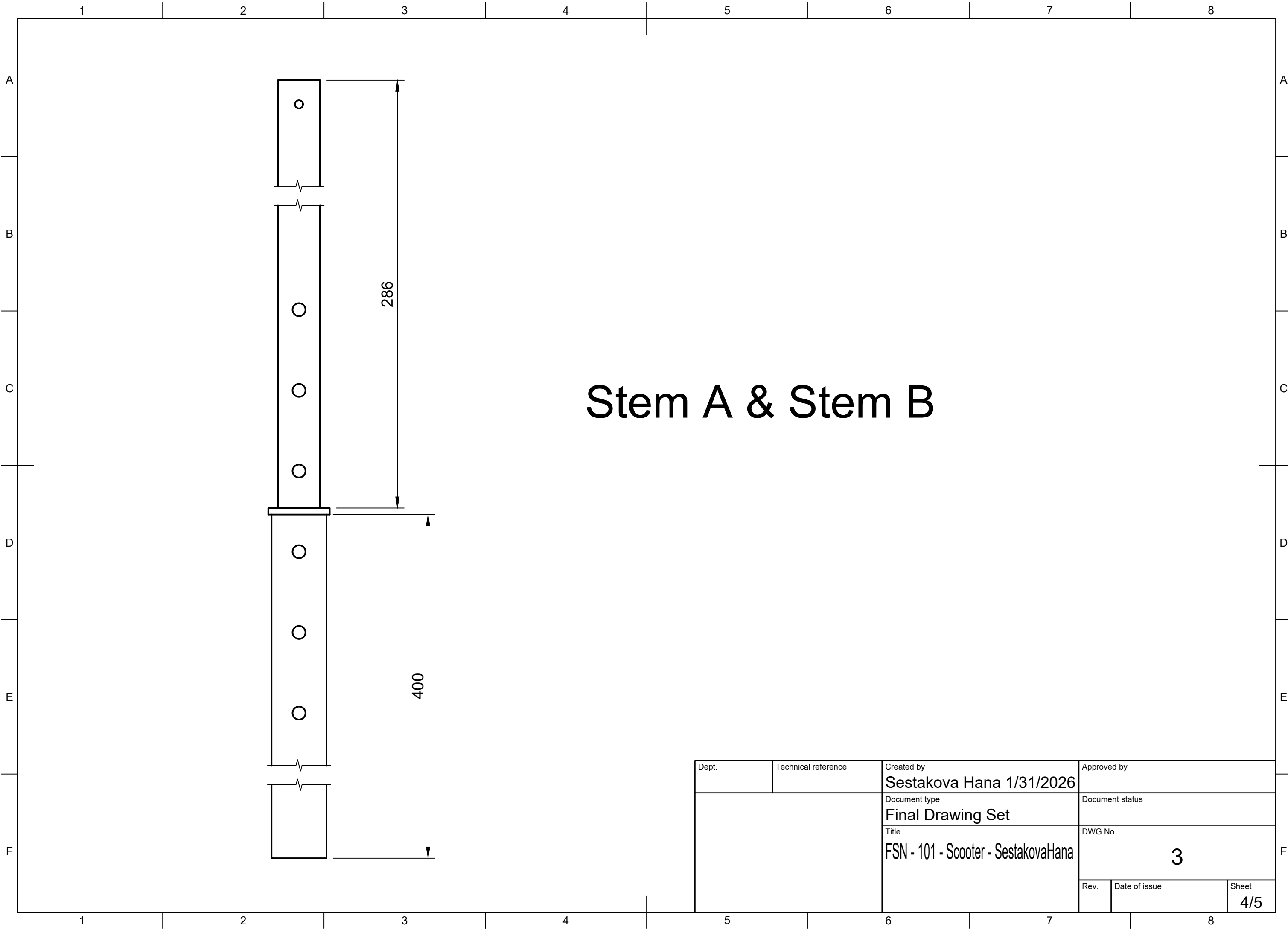
Dept.	Technical reference	Created by <b>Sestakova Hana 1/31/2026</b>	Approved by	
		Document type <b>Final Drawing Set</b>	Document status	
		Title <b>FSN - 101 - Scooter - SestakovaHana</b>	DWG No. <b>1</b>	
	Rev.	Date of issue	Sheet <b>2/5</b>	

1 2 3 4 5 6 7 8



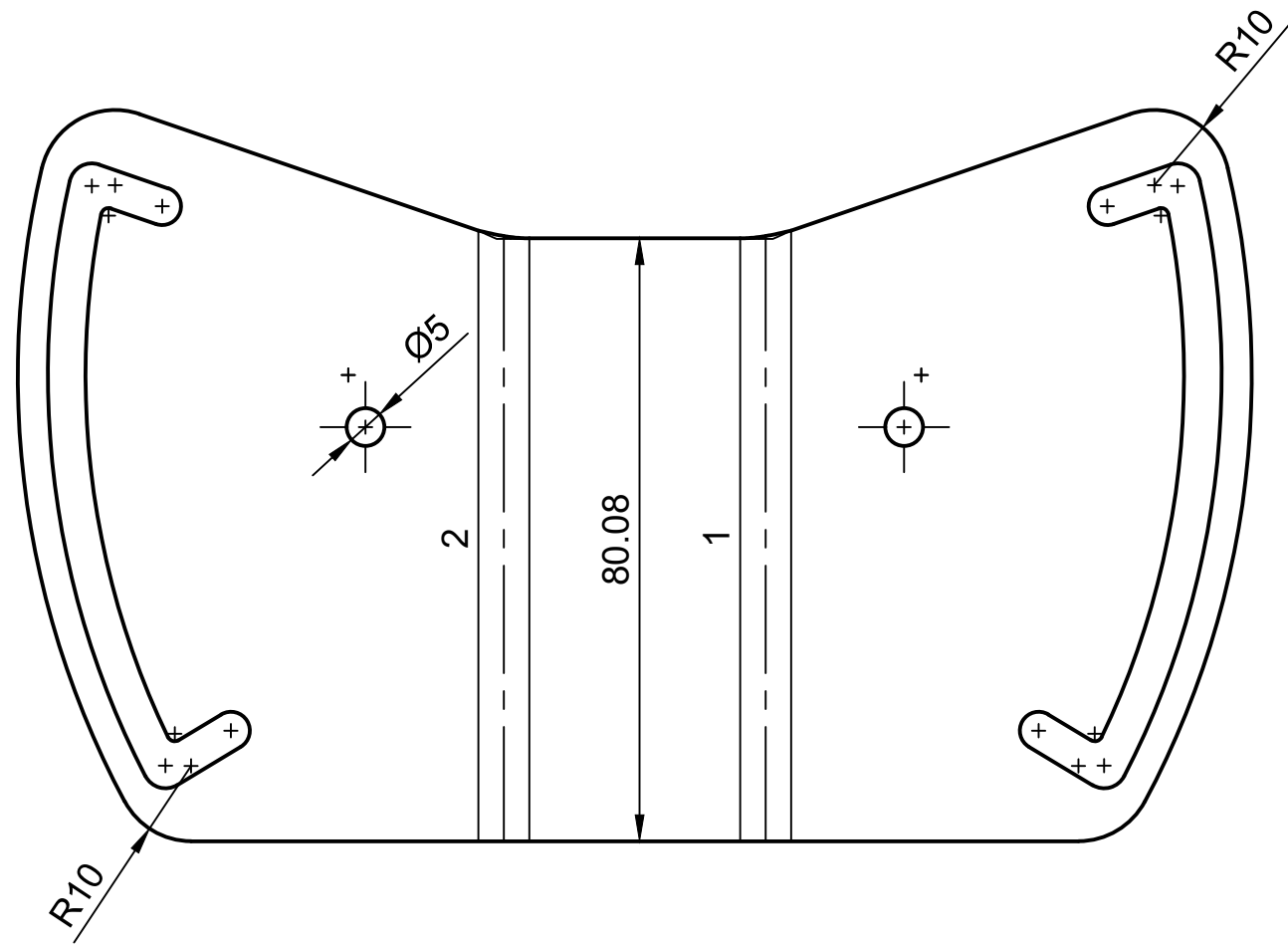
# Wheel 1

Dept.	Technical reference	Created by <b>Sestakova Hana 1/31/2026</b>	Approved by
		Document type <b>Final Drawing Set</b>	Document status
		Title <b>FSN - 101 - Scooter - SestakovaHana</b>	DWG No. <b>2</b>
Rev.	Date of issue	Sheet <b>3/5</b>	



# Stem A & Stem B

Dept.	Technical reference	Created by <b>Sestakova Hana 1/31/2026</b>	Approved by	
		Document type <b>Final Drawing Set</b>	Document status	
		Title <b>FSN - 101 - Scooter - SestakovaHana</b>	DWG No. <b>3</b>	
	Rev.	Date of issue	Sheet <b>4/5</b>	



Bend Table			
ID	Direction	Angle	Radius
1	Up	90	3
2	Up	90	3

# Folding Bracket Flat Pattern

Dept.	Technical reference	Created by <b>Sestakova Hana 1/31/2026</b>	Approved by	
		Document type <b>Final Drawing Set</b>	Document status	
		Title <b>FSN - 101 - Scooter - SestakovaHana</b>	DWG No. <b>4</b>	
		Rev.	Date of issue	Sheet <b>5/5</b>